



**MAG-METER MS 2500**  
**Full Pipe Electromagnetic Flow Meter**  
**Sensor í Flanged Typeí**

**TECHNICAL SPECIFICATIONS**  
**Mag-Meter MS 2500**

<b>Nominal diameter:</b>	DN 25 to DN 2000
<b>Body material:</b>	Carbon steel painted Stainless steel AISI 304/316 (optional)
<b>Nominal pressure:</b>	PN 16 Other on request
<b>Process connections:</b>	Flange: UNI, ANSI, DIN, JIS Other on request
<b>Flanges material:</b>	Carbon steel Stainless steel AISI 304/316 (optional)
<b>Liquid temperature:</b>	0đ 60°C with PP lining -5đ 80°C with Ebonite lining -20đ 100°C with PTFE lining in compact version -20đ 150°C with PTFE lining in separate version
<b>Lining material:</b>	Polypropylene Ebonite PTFE Other on request
<b>Electrode material:</b>	Stainless steel AISI 316L Hastelloy B or C Platinum-rhodium Tantalum Other on request
<b>Protection rate:</b>	Compact version . IP 67 Separate version (max. 20m) . IP 68 Separate version (max. 500m), with preamplifier . IP 67 (optional IP 68)
<b>Accuracy:</b>	± 0,2% (with ML200. ML210. ML202) ± 0,4% (with ML190) (flow speed > 1m/s)
<b>Repeatability:</b>	± 0,1%

Changes without notics

Updated 19/10/2010 by BS

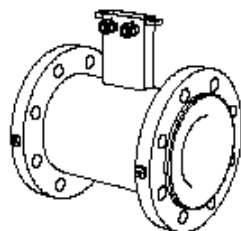
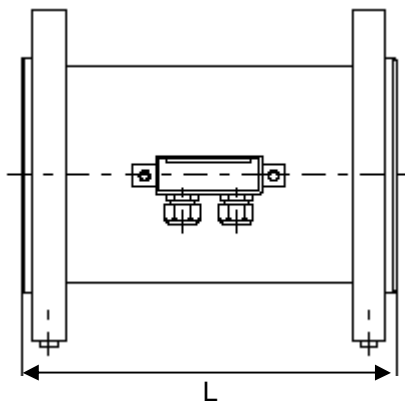
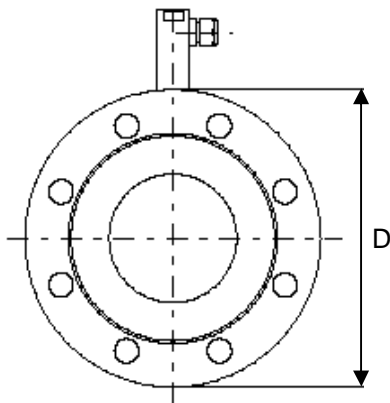
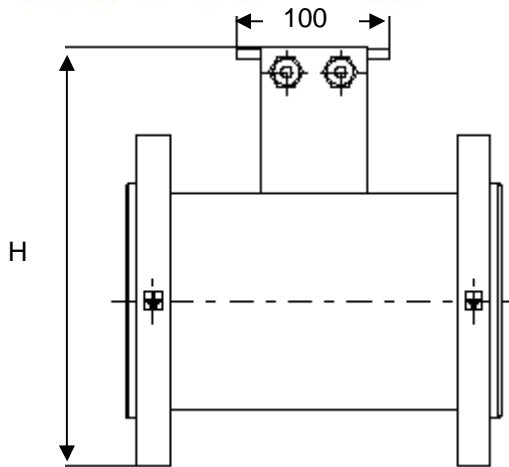


DIMENSIONS Mm		PN						
		PN10	PN16	PN25	PN40	PN64	ANSI 150	ANSI 300
25	L	200	200	200	200	200	200	200
	H	185	185	185	185	198	18	190
	D	115	115	115	115	140	108	124
32	L	200	200	200	200	200	200	200
	H	203	203	203	203	209	192	199
	D	140	140	140	140	155	118	133
40	L	200	200	200	200	200	200	200
	H	213	213	213	213	220	207	221
	D	150	150	150	150	170	127	156
50	L	200	200	200	200	200	200	200
	H	228	228	228	228	233	222	228
	D	165	165	165	16	180	152	165
65	L	200	200	200	200	200	200	200
	H	248	248	248	248	257	245	251
	D	185	185	185	185	205	178	191
80	L	200	200	200	200	200	200	200
	H	263	263	263	263	267	259	268
	D	200	200	200	200	215	191	210
100	L	250	250	250	250	250	250	250
	H	283	283	294	294	297	288	300
	D	220	220	235	235	250	229	254
125	L	250	250	250	250	250	250	250
	H	313	313	325	32	330	315	328
	D	250	250	270	270	295	254	279
150	L	300	300	300	300	300	300	300
	H	344	344	355	355	377	341	360
	D	285	285	300	300	345	279	318
200	L	350	350	350	350	350	350	350
	H	399	399	415	425	435	401	420
	D	340	340	360	375	415	343	381
250	L	450	450	450	450	450	450	450
	H	454	460	475	493	491	461	480
	D	395	405	425	450	470	406	445
300	L	500	500	500	500	500	500	50
	H	504	515	535	558	545	527	546
	D	445	460	485	515	530	483	521
350	L	550	550	550	550	550	550	550
	H	564	575	598	619	603	582	607
	D	505	520	555	580	600	533	584
400	L	600	600	600	600	600	600	600
	H	620	630	659	695	670	639	664
	D	565	580	62	660	670	597	648
450	L	600	600	600	600		600	600
	H	670	690	709	720		688	726
	D	615	640	670	685		635	711
500	L	600	600	600	600		600	600
	H	725	758	769	784		751	770
	D	670	715	730	755		699	775
600	L	600	600	600	600		600	600
	H	830	879	880	911		866	916
	D	780	840	845	890		813	914
650	L						650	650
	H						921	1002
	D						870	972
700	L	700	700	700	700			
	H	895	949	989	1016			
	D	800	910	960	995			
750	L						750	750
	H						1032	1121
	D						984	1092
800	L	800	800	800	800			
	H	1058	1060	1106	1149			
	D	1015	1025	1085	1114			
850	L						850	850
	H						1149	1230
	D						1111	1207
900	L	900	900	900	900		900	900
	H	1158	1160	1206	1259		1206	1292
	D	1115	1125	1185	1250		1168	1270
1000	L	1000	1000	1000	1000		1000	1000
	H	1269	1284	1329	1369		1381	1467
	D	1230	1255	1320	1360		1346	1448
1200	L	1200	1200	1200	1200			
	H	1490	1506	1539	1579			
	D	1455	1485	1530	1575			



**FLOW-TRONIC**

Rue J.H.Cool 19a B-4840 Welkenraedt Belgium Tel.: +32 (0)87 899799  
 Fax.: +32 (0)87 899790 info@flow-tronic.com www.flow-tronic.com



## TECHNICAL SPECIFICATIONS Mag-Meter MS 2500

	MS 2500	
	Standard	Optional
ML 190	+/- 0.4 % v.l./r.v	
ML 200	+/- 0.2 % v.l./r.v	
ML 201	+/- 0.2 % v.l./r.v	
ML 202	+/- 0.2 % v.l./r.v	
ML 191	+/- 0.4 % v.l./r.v	
ML 210	+/- 0.2 % v.l./r.v	
ML 211	+/- 0.2 % v.l./r.v	
ML 212	+/- 0.2 % v.l./r.v	
ML 3F1	+/- 0.2 % v.l./r.v	
ML 110	+/- 0.8 % v.l./r.v	

Repeatability : +/- 0.1 %

Reference condition for accuracy definition

- Water temperature : 20°C
- Ambient temperature : 25°C
- Test time : >60 sec.
- Converter warm-up : > 60 min.
- Constant flow rate during the test
- Pressure : 50 Kpa
- Speed of liquid > 1 m/s